

AURATON 2YA Thermostat User Manual

Thank you for choosing our products and services

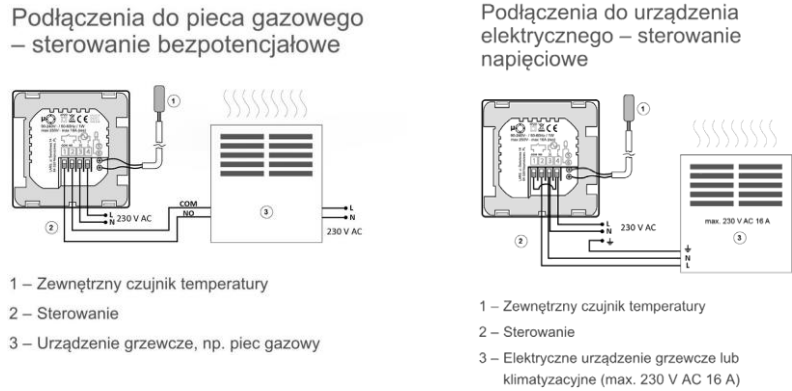
FEATURES

- (A) Two sensors: built-in and external
- (B) 0.5°C accuracy keeps the temperature at the desired level
- (C) Child lock to prevent mishandling
- (D) Power-off data memory
- (E) Vacation mode allows you to enjoy savings and security while you are away
- (F) External sensor temperature can be checked

Product Specifications

☆Power Supply: 90-240Vac 50/60Hz ☆Range temp.: 1~70°C  
☆Display Accuracy:0.5°C☆Isolation Condition: Normal Environment  
☆Probe Sensor ::NTC(10k)1%☆Working Program :Weekly  
  
☆Contact load capacity:3A/(indium); 16A/(res) ☆Output: Switching relay  
☆ Limit Temp. Range::1~70°C☆Installation: flush mounted  
  
☆ Temp Adjustment Range::5~35°C ☆Dimensions (mm) :86\*86\*27

Connection diagram



Display



Icon Description

- Auto mode; Running a programmed programme
- Manual mode
- Clock
- Programming mode
- Temporary manual mode
- Holiday mode, holidays and temp. can be set to run in countdown mode
- Heating, icon disappears, when heating stops
- External NTC sensor
- WIFI connection, flashing EZ distribution mode
- Child lock
- Wi-Fi Status: Disconnected
- Cloud icon: Flashing AP distribution network mode
- Activating the window function
- Room Temp.
- Temp. Cooling
- mode, a flashing icon indicates the cooling mode exit

Button description

NO	symbol	description
A		On/Off: Short press to turn on/off
B		1 Short press  used to switch between automatic and manual modes 2 Turn on the thermostat, press and hold  for 3-5 seconds to go to programming settings 3. Turn off the thermostat, press and hold  for 3-5 seconds to go to options Advanced A
C		1 Confirmation button: use it with 2 Just short press to set the time 3 Turn on the thermostat, press and hold it for 3-5 seconds to set the holiday mode. When <b>OFF</b> appears, press  or  change to ON, and press  to confirm that Vacation Mode is open 4 Turn off the thermostat, press and hold for 3-5 seconds to go to options advanced B
D		1 Decrease button 2 Long press to lock/unlock
E		1 Increase button; 2 Long press to ask for the temperature of the outdoor sensor (only available for BN position select N3 in advanced option B) 3 From the program model, press the button  or  switch to temporary manual mode

Programming

5+2(factory default settings), 6+1 and 7 days. 6 temperature changes selectable by the user. In the advanced options, you can choose a different mode. In the power-on state, press and hold the button for 3-5 seconds to enter the programming mode setting, then short press the button select: hour, minute, time interval, and press the i button to adjust the data. After about 10 seconds, the thermostat will automatically save the settings.

Wake up	Egress	Return	Egress	Return	Sleep
6:00 a.m.	20°C	8:00 a.m.	15°C	11:30 AM	15°C
				1:30 p. m.	15°C
				5:00 p.m.	15°C
				10:00 p.m.	15°C

The optimal comfort temperature is 18°C-22°C.

Advanced Function A

Turn off the thermostat, long press for 3-5 seconds to access the advanced option A. From A1 to AE, short press to select option and adjust the data by Or , short press to switch to the next option. After about 5 seconds after the end of the The thermostat will remember and close the settings.

NO	Settings options	Data setting function	Settings Factory
A1	Temperature measurement Calibration	-9~+9°C (Displayed as corrected room temperature)	-1
A2	Operating temperature differential settings Start/Stop (Histereza)	0.5-2.5°C	1°C
A3	Lock settings for children	0:half lock 1:full lock	0
A4	On/off state memory after power cut	0:Thermostat on/off with memory after power on 1:Thermostat off after power on 2:Thermostat on when power on	0
A5	Standby brightness	Brightness levels: 0 to 4 (0-off)	3
A6	Choice weekly programming.	0: 5+2 1: 6+1 2: 7	0
A7	Range setting minimum temperature	1-10°C	5°C
A8	Range setting maximum temperature	20-70°C	35°C
A9	Cold protection	1-10°C With temp setting = 10°C, if the button is pressed,  【--】 will display, canceling the low temperature protection	5°C
AA	Heat protection for outdoor sensor	20°C-70°C With temp setting =20°C, if the button is pressed,  【--】 will be displayed, canceling the high temperature protection	45°C
AB	Temperature differential settings for protection Heat	1-9°C	2°C
AC	Window function triggers temperature	10-20°C, The set temperature is 10°C, Reduce it, it will display 【--】 , and then cancel this function.	--
AD	Window function runtime	5-60min	15
AF	Factory reset	Displayed Ao symbol, hold button  , the regulator resets.	
AH	Heating/cooling mode	0: heating 1: Cooling	0
AE	Brightness after waking up	Brightness levels: 1 to 5	4

Advanced Function B

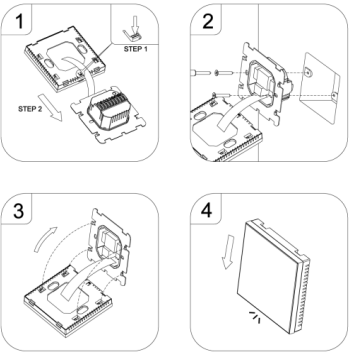
Power off state, press for 3-5 seconds to access advanced options B. Short press to select an option and adjust the data by or short press to switch the next option. About5 seconds after the settings are complete, the thermoastt will rememberand close the settings.

NO	Settings options	Data setting function	Settings Factory
BN	Sensor Control Options	N1: Sensor only controller operation Built-in. N2:Regulator operation with external sensor only. N3: Dual-sensor controller operation. In In this situation, the heating will be switched off if any of the sensors reaches the required temperature.	N1
BC	Function	0: Descaling Off	0
	descaling	1: Enable the descaling function	
Because	Version Software	It cannot be changed	02

**Sensor fault display:** select the correct operation of the embedded and external sensor, if it is selected incorrectly or there is a sensor fault (failure), the screen will display "E1" or "E2". The thermostat will stop heating until the fault is corrected.

Specifications:

Zasilanie	90-240 V AC / 50-60 Hz / 1 W
Zakres temperatury pracy	0-90°C
Cykl pracy	Tygodniowy, programowalny
Sygnalizacja stanu pracy	Wyświetlacz LED
Obciążalność przełącznika	Max. 3A/(ind); 16A (res)
Ilość poziomów temperatury	8
Temperatura minimalna / maksymalna	1 - 10°C / 20 - 70°C
Zakres sterowania temperatury	1 - 70°C
Histereza	0,5°C - 2,5°C
Stopień ochrony	IP20
Wilgotność	≤85% bez kondensacji
Kolor	czarny lub biały
WiFi	Tuya Smart, Smart Life



AURATON 2YA Temperature Controller Mobile App Programming Guide

Preparation required for Wi-Fi connection:

You will need a 4G mobile phone and a wireless router. Connect your wireless router to your mobile phone and write down the WIFI password [you will need it after pairing the thermostat with the Wi-Fi network]. **Step 1 Download the app on your phone**



Android users can download the "Tuya Smart" or "Smart life" app on Google Play, and iPhone users can search for "Tuya Smart" or "Smart life" on the App Store.

Step 2 Register your account

- Once the app is installed, click "sign up" (Fig. 2-1).
- Read the Privacy Policy and press the I Agree button to proceed to the next step. (Fig. 2-2)
- The registration account name uses an email address or mobile phone number. Select the region, then click "Continue" (Fig. 2-3)
- You will receive a 6-digit verification code via email or SMS. Enter it in the verification window on your phone (Fig. 2-4).
- Set a password. The password must contain between 6 and 20 letters and/or numbers. Click "Done" (Fig. 2-5)

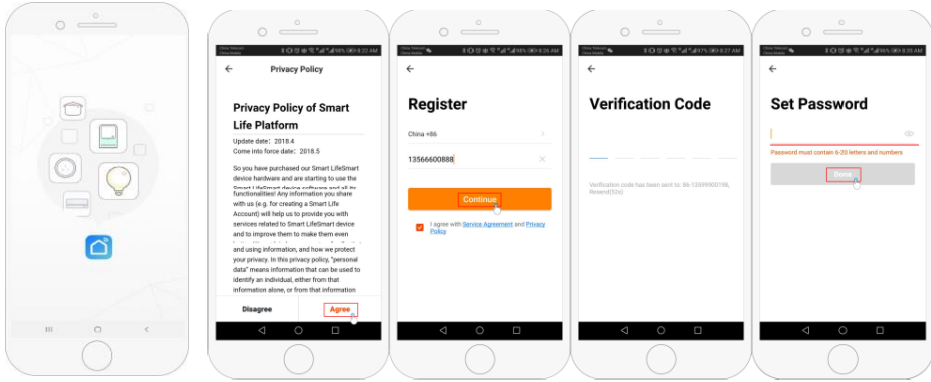


Fig 2-1 Figs 2-2 Figs 2-3 Figs 2-4 Figs 2-5

Step 3 Creating Home Information (Fig. 3-1)

- Type the name of your home (Fig. 3-2).
- Select or add a room (Fig. 3-2).
- Set the location permissions (Fig. 3-3), and then set the thermostat location (Fig. 3-4).

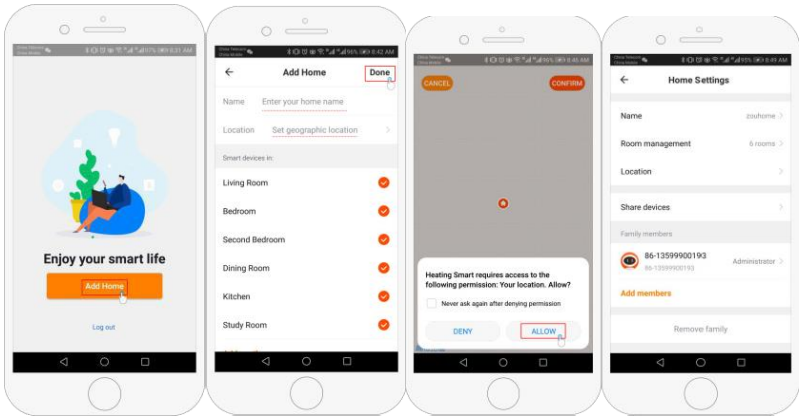


Fig 3-1 Figs 3-2 Figs 3-3 Figs 3-4

Step 4a Connect the Wi-Fi signal (EZ distribution mode)

- Go to your phone's Wi-Fi settings and make sure you're connecting via 2.4 g, not 5 g. Most modern routers have 2.4g and 5g connections. 5g connections do not work with the thermostat.
- On your phone, press "Add Device" or "+" in the upper right corner of the app to add a device (Fig. 4-1) and in the small appliances section, select the device type "Thermostat" (Fig. 4-2).
- With the thermostat on, press and hold the " " and " " buttons simultaneously until both icons( and ) flash to indicate EZ distribution mode. This can take anywhere from 5 to 20 seconds.
- On the thermostat, confirm the connection by pressing the and icons will flash rapidly, at this time Confirm the connection in the app. Enter the password of the wireless router (case sensitive, see Fig. 4-4) and confirm. The app will connect automatically (Fig. 4-5) Typically, it may take up to 5~90 seconds.

If you get an error message, make sure that you have entered the correct Wi-Fi password (the bottom of the router is usually case-sensitive) and that you are not using a 5G Wi-Fi connection.

You can edit the room name after connecting the device.

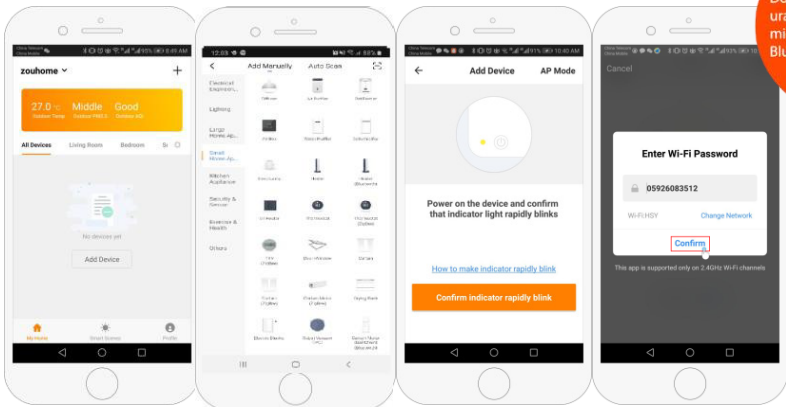


Fig 4-1 Figs 4-2 Figs 4-3 Figs 4-4



Fig 4-1  
https://manuals.auraton.pl

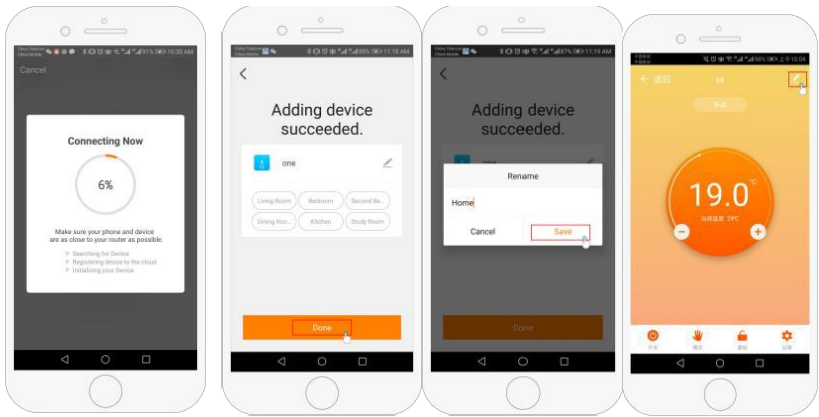


The devices are marked with the symbol of a crossed-out waste container. In accordance with the European Directive 2012/19/EU and the Act on Waste Electrical and Electronic Equipment, such marking informs that this equipment, after its period of use, cannot be placed together with other waste from the Waste Industry.

household.

The user is obliged to return it at the collection point of waste electrical and electronic equipment.

Producer:  
LARS Andrzej Szymański, Świerkowa 14, 64-320 Niepruszewo, POLAND  
www.auraton.pl



Figs 4-5 Figs 4-6 Figs 4-7 Figs 4-8

Step 4b (Alternate Method) (AP Mode Pairing) Only perform this action if step 4a failed.

- On your phone, press "Add Device" or "+" on the top right corner of the app (Fig. 4-1) and in the small appliances section, select the device type "Thermostat" and click AP Mode on the top right corner. (Fig. 5-1).
- On the thermostat, press the power button, then press and hold " " and " " until the " " flashes . This can take anywhere from 5 to 20 seconds. If it is also flashing, release the buttons and press and hold " " and " " simultaneously again until only " " flashes .
- In the app, click "confirm LED flashing" and then enter the password of your wireless router(Fig. 4-4).
- Press "Connect Now" and select the thermostat's Wi-Fi signal (Smartlife-XXXX) Fig. 5-3 and 5-4) . You will get a message that the Internet may not be available and a request to change the network, but you should ignore it.
- Go back to the app and click "Connect" . The app will connect automatically (Fig. 4-5).

Typically, this can take anywhere from 5~90 seconds, and then it will display a confirmation (Fig. 4-6) and allow you to rename the thermostat (Fig. 4-7).

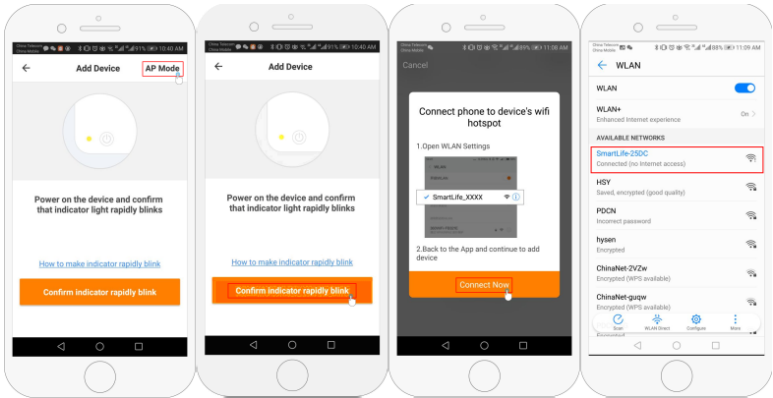


Fig 5-1 Fig 5-2 Figs 5-3 Figs 5-4

Step 5 Change Sensor Type and Temperature Limit

Press the setting button " " (Fig. 4-8) in the lower right corner to display the menu. Click Sensor type and enter your password (usually 123456). After that, 3 options will be available:

- The "Single Built-in Sensor" will only use the internal air sensor (DO NOT USE THIS SETTING\*).
  - The "single outdoor sensor" will only use the floor probe (ideal for bathrooms where the thermostat is installed outside the room).
  - The "Internal and External Sensors" will use both sensors to read the temperature (the most commonly used option). Once you have selected the sensor type, check that the "Set max. temp." is set to the correct temperature for the floor (typically 45°C).
- \*The floor probe must always be used with electric underfloor heating to protect the floor.

Step 6 Programming the daily schedule

Press the setting button (Fig. 4-8) in the lower right corner to display the menu. At the bottom of the menu, there are 2 standalone options called "weekly program type" and "weekly program setting". "Weekly Program Type" allows you to select the number of days to be scheduled, between 5+2 (weekday+weekend) 6+1 (Monday-Saturday+Sunday) or 7 days (whole week). The "Weekly Program" setting allows you to select the time and temperature of your daily schedule at different points. There will be 6 time and temperature options. See an example below.

Part 1	Part 2	Part 3	Part 4	Part 5	Part 6
Wake up	Leaving the house	Return home	Leaving the house	Return home	Sleep
06:00	08:00	11:30	13:30	17:00	22:00
20°C	15°C	20°C	15°C	20°C	15°C

If you don't need the temperature to rise and fall in the middle of the day, you can set the same temperature in parts 2, 3 and 4 so that it doesn't rise again until the time in part 5.

Additional Features

**Vacation Mode:** The thermostat can be programmed to maintain the selected lower temperature while the user is away for up to 30 days. Vacation mode can be found in the (Figs. 4-8). You can set the number of days from 1 to 30 and the temperature up to 27 °C.

**Lock Mode:** This option allows you to lock the thermostat remotely so that no changes can be made. This can be done by clicking on the " " (Figs. 4-8). To unlock, click the " " (Fig. 4-8).

**Device Grouping:** You can group multiple thermostats together and control them all at once. This can be done by clicking the " " button (Fig. 4-8) in the upper right corner and then clicking Create Group. If you have multiple thermostats connected, this will allow you to select each one you want to be in the group, and once you confirm your selection, you can name the group.

**Home management:** You can add other people to your home and let them control your connected devices. To do this, the family member must have the Smart Life app downloaded on the phone and

registered account. After that, you need to go back to the home page and click on the home name in the top left corner, then click on Home Management. Once you've selected the home you want to manage, you'll see an option to Add Member. To send him an invitation, you need to enter the mobile number or email address with which the member registered the application. You can set whether they're an administrator, which allows them to make changes to the device, such as deleting it.