

Socket Thermostat Mobile App Programming Guide

Preparation required for Wi-Fi connection:

You will need a 4G mobile phone and a wireless router. Connect your wireless router to your mobile phone and write down the WIFI password [you will need it after pairing the thermostat with the Wi-Fi network].

Step 1 Download the app on your phone



Android users can download the "Tuya Smart" or "Smart life" app on Google Play, and users iPhones can search for "Tuya Smart" or "Smart life" in the App Store.

Step 2 Register your account

- Once the app is installed, click "sign up" (Fig. 2-1).
- Read the Privacy Policy and press the I Agree button to proceed to the next step. (Fig. 2-2)
- The registration account name uses an email address or mobile phone number. Select the region, then click "Continue" (Fig. 2-3)
- You will receive a 6-digit verification code via email or SMS. Enter it in the verification window on your phone (Fig. 2-4).
- Set a password. The password must contain between 6 and 20 letters and/or numbers. Click "Done" (Fig. 2-5)

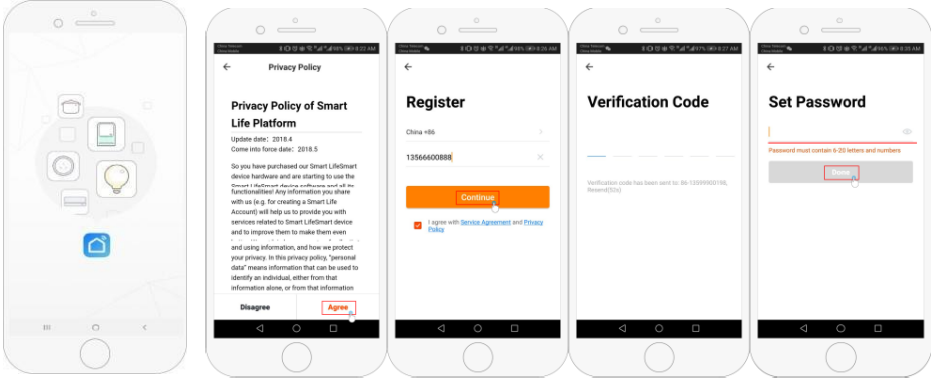


Fig 2-1 Figs 2-2 Figs 2-3 Figs 2-4 Figs 2-5

Step 3 Creating Home Information (Fig. 3-1)

- Type the name of your home (Fig. 3-2).
- Select or add a room (Fig. 3-2).
- Set location permissions (Fig. 3-3), then set the location thermostat (rys. 3-4).

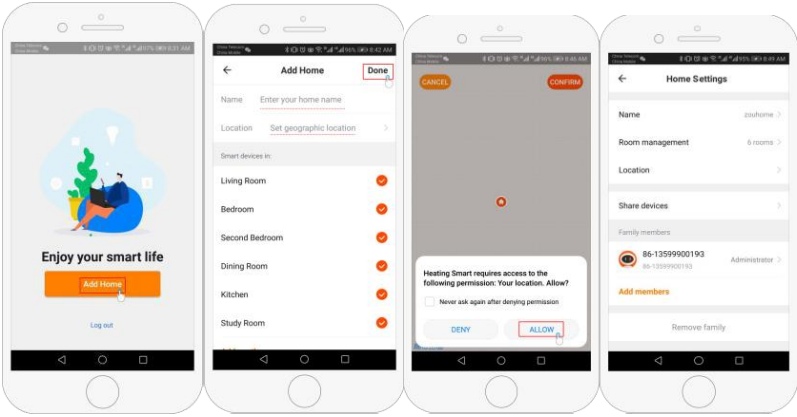


Fig 3-1 Figs 3-2 Figs 3-3 Figs 3-4

https://manuals.auraton.pl



Disposal of the appliance

The devices are marked with the symbol of a crossed-out waste container. In accordance with the European Directive 2012/19/EU and the Act on Waste Electrical and Electronic Equipment, such marking informs that the equipment after its period of use cannot be

placed together with other waste from the household appliances. The user is obliged to return it at the point of collection of waste electrical and electronic equipment.

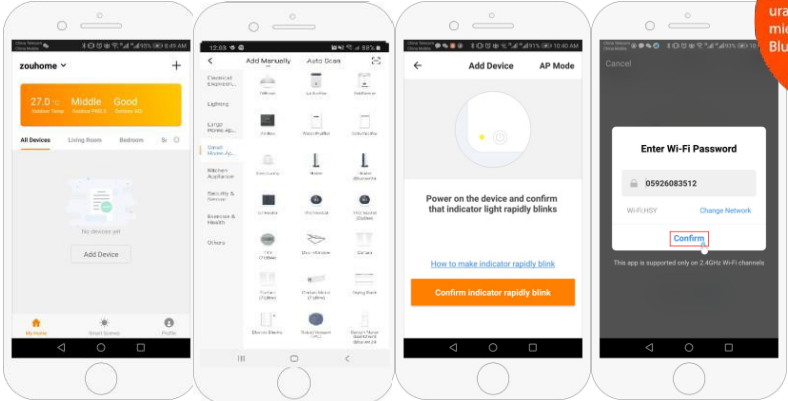
Producer: LARS Andrzej Szymański, Świerkowa 14, 64-320 Niepruszewo, POLAND [www.auraton.pl](http://www.auraton.pl)

Step 4 Connect the Wi-Fi signal (EZ distribution mode)

- Go to your phone's Wi-Fi settings and make sure you're connecting via 2.4 g, not 5 g. Majority of modern routers have 2.4G and 5G connections. 5g connections do not work with the thermostat.
- On your phone, press "Add Device" or "+" in the upper right corner of the app to add a device (Fig. 4-1) and in the small appliances section, select the device type "Thermostat" (Fig. 4-2).
- With the thermostat on, press and hold the "Set" and "OK" buttons simultaneously until both icons (Wi-Fi and thermostat icons) flash to indicate EZ distribution mode. This can take anywhere from 5 to 20 seconds.
- On the thermostat, confirm the connection by pressing the Wi-Fi and thermostat icons. The icons will flash rapidly, at this time confirm the connection in the app. Enter the password of the wireless router (case sensitive, see Fig. 4-4) and confirm. The app will connect automatically (Fig. 4-5) Typically, it may take up to 5~90 seconds.

If you get an error message, make sure that you have entered the correct Wi-Fi password (the bottom of the router is usually case-sensitive) and that you are not using a 5G Wi-Fi connection.

You can edit the room name after connecting the device.



Do prawidłowej konfiguracji parowania należy mieć włączoną funkcję Bluetooth w telefonie.

Step 5 Programming the daily schedule

Press the setting button (Fig. 4-8) in the lower right corner to display the menu. At the bottom of the menu, there are 2 standalone options called "weekly program type" and "weekly program setting". "Weekly Program Type" allows you to select the number of days to be scheduled, between 5+2 (weekday+weekend) 6+1 (Monday-Saturday+Sunday) or 7 days (whole week). The "Weekly Program" setting allows you to select the time and temperature of your daily schedule at different points. There will be 6 time and temperature options. See an example below.

Part 1	Part 2	Part 3	Part 4	Part 5	Part 6
Wake up	Leaving the house	Return home	Leaving the house	Return home	Sleep
06:00	08:00	11:30	13:30	17:00	22:00
20°C	15°C	20°C	15°C	20°C	15°C

If you don't need the temperature to rise and fall in the middle of the day, you can set the same temperature in parts 2, 3 and 4 so that it doesn't rise again until the time in part 5.

Additional Features

**Holiday Mode:** The thermostat can be programmed to maintain the selected lower temperature during the user's absence for up to 30 days. Holiday mode can be found in the "" section (Fig. 4-8). You can set the number of days from 1 to 30 and the temperature up to 27 ° C.

**Lock Mode:** This option allows you to lock the thermostat remotely so that you cannot enter no changes. This can be done by clicking on the " " symbol (Fig. 4-8). To unlock, click the " " symbol again (Fig. 4-8).

**Device Grouping:** You can group multiple thermostats together and control them all at once. This can be done by clicking the " " button (Fig. 4-8) in the upper right corner and then clicking Create Group. If you have multiple thermostats connected, this will allow you to select each one, that you want to be in the group, and once you confirm your selection, you can name the group.

**Home management:** You can add other people to your home and let them control your connected devices. To do this, the family member must have the Smart Life app downloaded on their phone and a registered account. After that, you need to go back to the home page and click on the home name in the top left corner, then click on Home Management. Once you've selected the home you want to manage, you'll see an option to Add Member. To send him an invitation, you need to enter your mobile phone number or

email address where the member registered the application. You can set whether they're an administrator, which allows them to make changes to the device, such as deleting it.